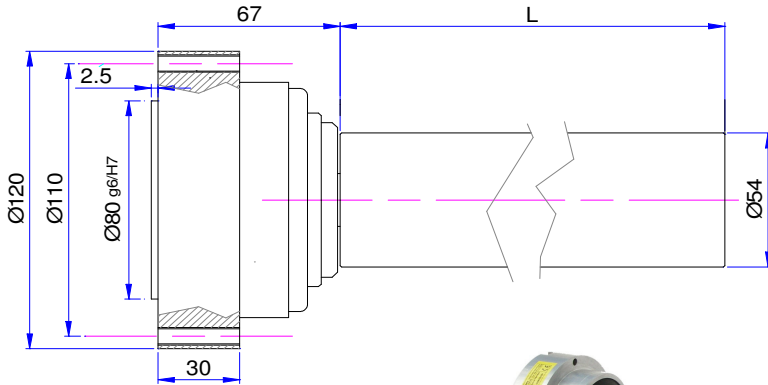
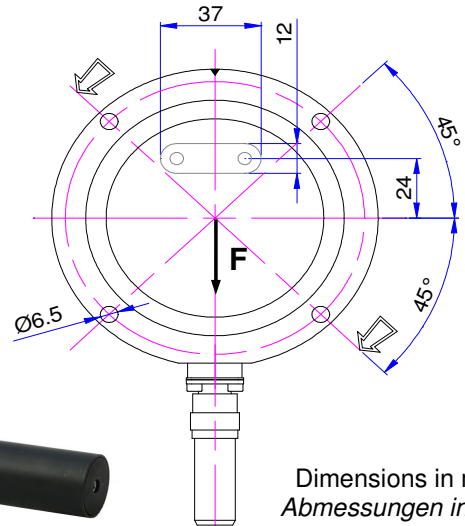


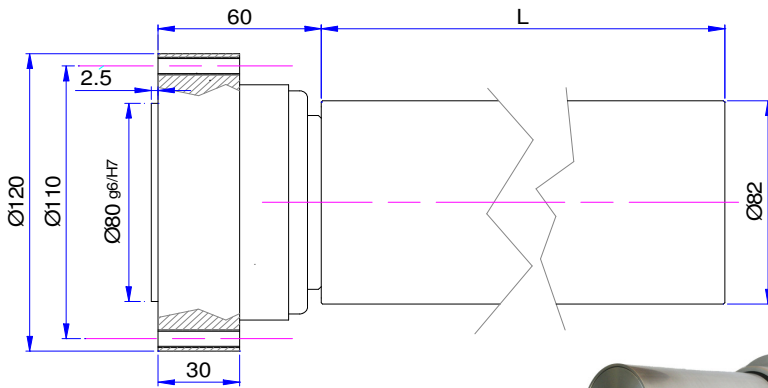
For measuring tension on a tape
Zur Messung des Bahnzuges



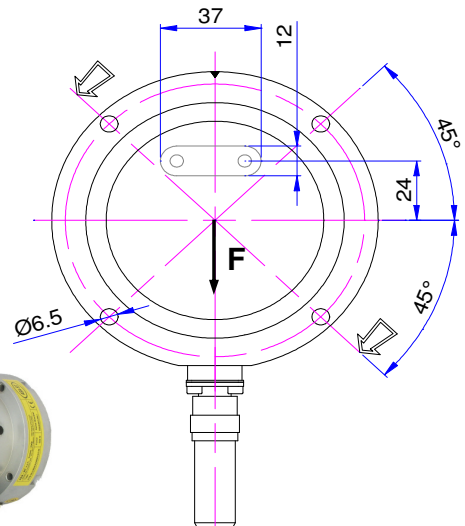
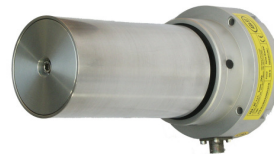
Nominal Force F
Meßbereich F **125 N - 250 N**



Dimensions in mm
Abmessungen in mm

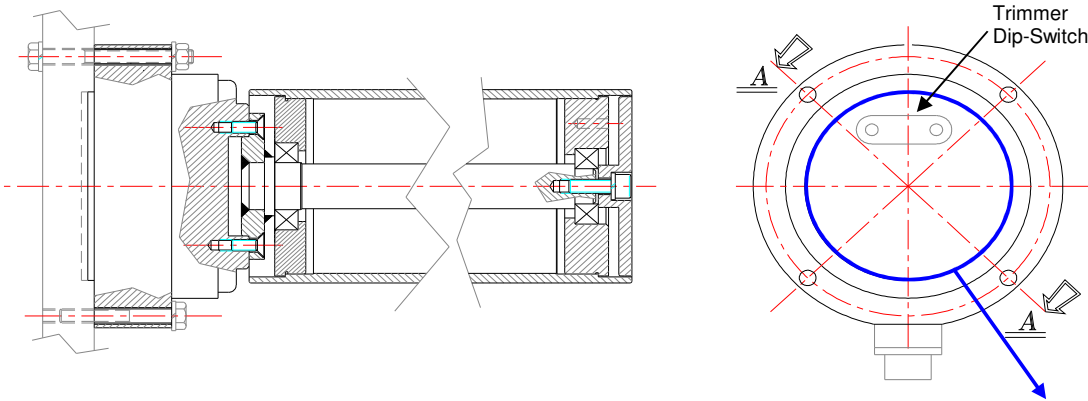


Nominal Force F
Meßbereich F **500 N - 1000 N**



Technical Data		Technische Daten
- Limit Load	> 150% F	- Grenzlaster
- Ultimate Load	> 200% F	- Bruchlast
- Accuracy	< 0.2 % F	- Genauigkeit
- Repeatability	< 0.2 % F	- Wiederholgenauigkeit
- Combined error	< 0.3 % F	- Totalfehler
- Zero bridge balance	± 1% F	- Nullpunktabweichung
- Temperature effect on zero	± 0.1% F / 10° C	- Temperatureinfluß auf den Nullpunkt
- Temperature range	+10 ... +60° C	- Arbeitstemperaturbereich
- Bridge resistance	350 ohm	- Brückenwiderstand
- Protection Level	IP55	- Schutzgrad
- Load cell material	Avional	- Material
- Supply voltage	24Vdc ±10% - 2W	- Speisespannung
- Output	0÷10V / 5mA analog, 4-20mA analog, RS485	- Ausgang
- Male connector, 4 poles, Ø18	MIL	- Zwitterstecker, 4 polige, Ø18
- Male connector, 5 poles, Ø21	ITT Cannon	- Zwitterstecker, 5 polige, Ø21

ASSEMBLING EXAMPLE EINBAUBEISPIELE



Keep this zone accessible to allow eventual calibration operation
Diesen Bereich für evtl. Kalibrierungen zugänglich lassen

	Male connector <i>Zwitterstecker</i>	Recommended female connector <i>Empfohlen Steckerhülse</i> (90°)	
MIL	IPT02A-8-4P-N436	IPT06A-8-4S(SR)-N436	IPT08-EM8-4S
ITT Cannon	SRCN2A 165P	SRCN6A 135S	----

Roll Data		Walzendaten
- Roll length	100 ÷ 250mm	- Walzenlänge
- Roll material	Aluminium 6061 hard anodizing <i>Aluminium 6061 harteloxiert</i>	- Walzenmaterial
- Roll surface	smooth / <i>glatt</i> grooved (on demand) / <i>gerieft (auf Anfrage)</i>	- Walzenoberfläche
- Surface treatment	on demand <i>auf Anfrage</i>	- Oberflächenbehandlung

ELECTRICAL CONNECTION ELEKTRISCHE ANSCHLÜSSE

Connector <i>Anschluß</i> MIL	Connector <i>Anschluß</i> ITT Cannon	Signal <i>Signal</i>	Signal <i>Signal</i>
A	1	+24V	+24V
B	2	COM24	COM24
C	3	OUT -	RS485+
D	4	OUT +	RS485 -
---	5	EARTH	EARTH

ORDER CODE BESTELLCODE

