



BT2000 Belt Tear and Spillage Detector

Because belt tears normally occur over the length of a conveyor it is very difficult to detect. When a belt tear occurred, the weight of the material causes the tear to open and the material will spill through the cut. The BT2000 has been designed and developed to catch the spilling material in the basket. The weight of the material in the basket will cause the basket to tilt backwards and a limit switch under the basket will make or break a contact that is used to stop the conveyor.

Features

- Maintenance free
- Easy to install
- Adjustable width and height
- Concealed Wiring
- Quick to Clean and Reset
- Available in Stainless

Specifications

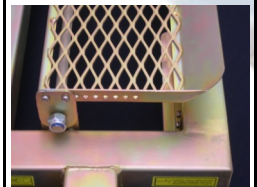
Contacts:	1xNO & NC
Contacts Operation:	Snap Action
Contacts Material:	Silver Plated
Contact Rating:	1.5A @ 240VAC
Ingress Protection:	IP65
Trip Weight: Approx:	1.5Kg
Material:	Mild Steel or S/Steel
Corrosion Protection:	Plated
Cable Length:	5m
Operating Temperature	-25 to 70°C

Ordering Information

Part No Mild Steel Plated:	S11514
Part No Stainless	S11515

Basket

The basket is equipped with a grid base to avoid nuisance trips from dust that could collect at the base.



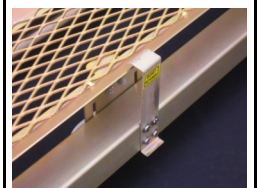
Resetting

The basket is cleaned by bending the spring steel retaining clip forward and tilting the basket backwards.



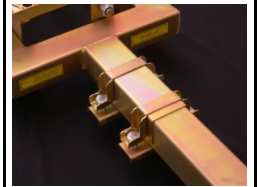
Basket Retainer

The spring steel basket retaining clip keeps the basket down to avoid strong winds from flipping the basket over



Width Adjustment

The end clamps makes the mounting width of the unit adjustable for ease of installation.



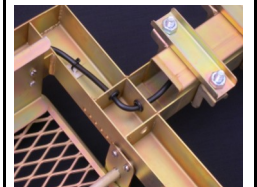
Height Adjustment

Side mounting brackets are designed to be attached to unistrut upright posts to enable height adjustment of the unit.



Concealed Wiring

All wiring is concealed inside the structure frame for protection against the moving conveyor belt.



Trip Switch

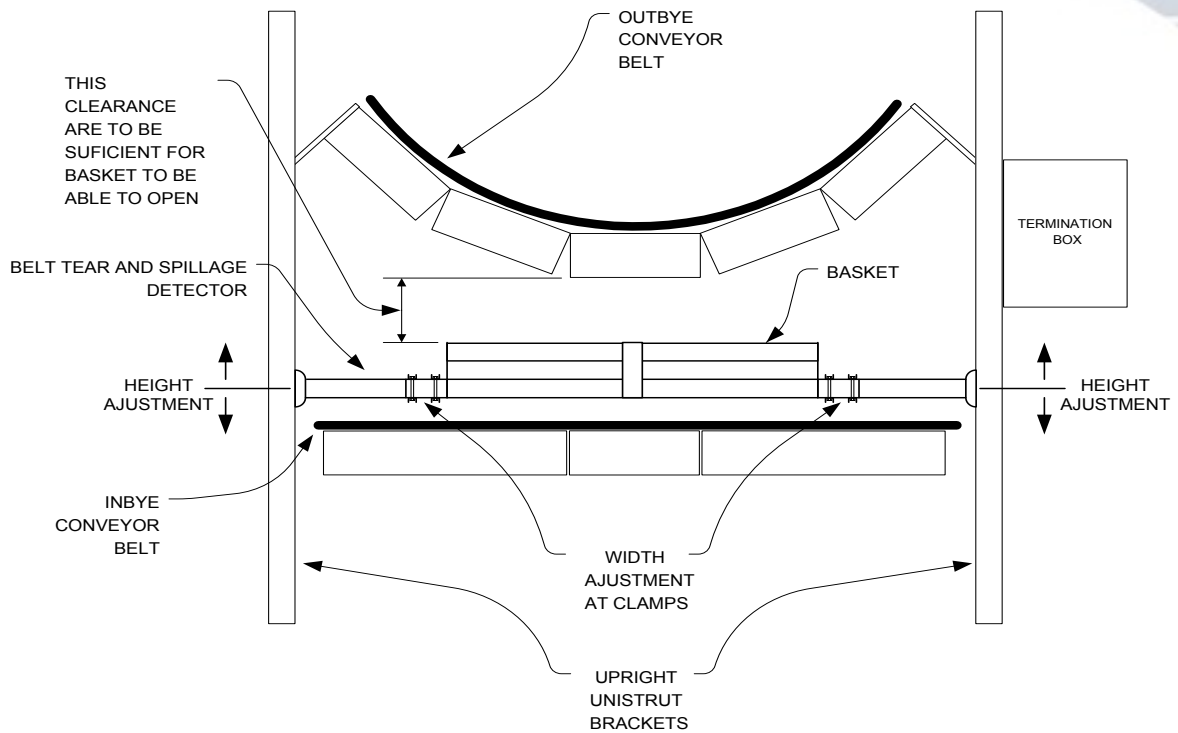
IP65 with a rubber boot for protection against water, dust, and mud





BT2000 Belt Tear and Spillage Detector

INSTALLATION POSITION-



Dimensions

Length	Adjustable from 1345 to 2000mm
Height	155mm
Width	290mm

BRAMCO ELECTRONICS Product Sheet

BRAMCO ELECTRONICS (Pty) Ltd
 3 Hospital Road Ext.2, Delmas
 PO Box 616, Delmas, 2210
 South Africa

Copyright Bramco Electronics
 Specifications subject to change without notice July 2012

Contact Details, South Africa
 Tel: +27 13 665 5288 / 1376
 Fax: +27 13 665 5287
 E-mail: sales@bramco.co.za
 Website: www.bramco.co.za

Contact Details, Australia
 Tel: +61 2 4014 4444
 Fax: +61 2 4967 4100
 E-mail: sales@bramco.com.au
 Website: www.bramco.com.au