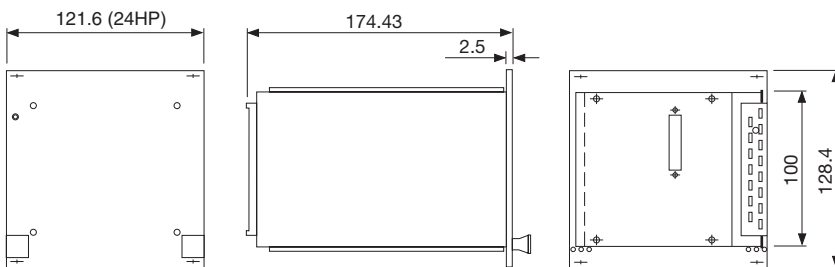


- 19" plug-in module
- Autoranging 120/230 VAC
- Optional power factor correction (at 230 V) according to EN 61000-3-2
- Power-Fail signal included, ACFAIL optional
- Parallel connection possible with load sharing
- Output permanent short-circuit proof and SELV according to EN 60950
- Overtemperature protection




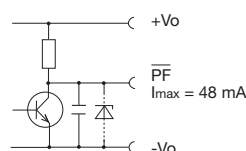
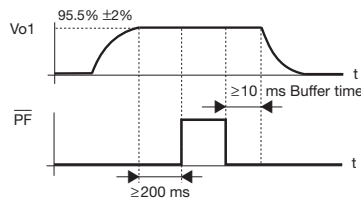
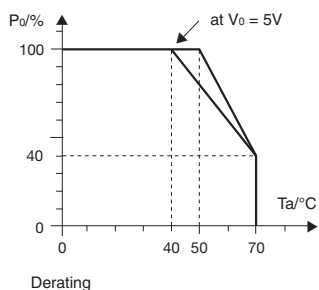
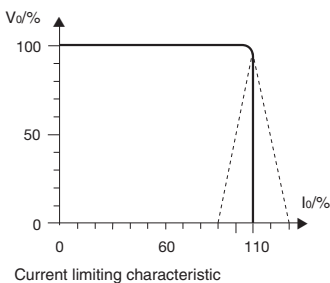
3U

Front panel: 24HP
 Handle width: 3HP

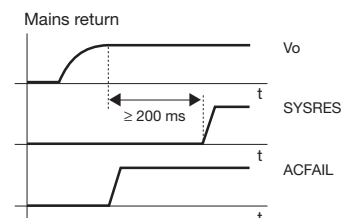
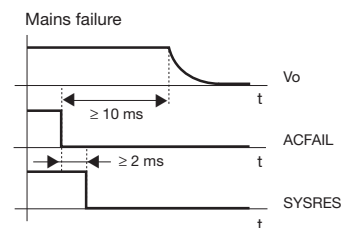
ORDER DATA				Order numbers in italics
Vo V	Io A	Width HP	Height U	Type No. without PFC
5	0 - 70	24	3	P362-05701 <i>15.7940.802</i>
12	0 - 25	24	3	P362-12251 <i>15.7940.902</i>
15	0 - 23	24	3	P362-15231 <i>15.7941.002</i>
24	0 - 15	24	3	P362-24151 <i>15.7941.102</i>
Additionally:				
Front panel (natural anodized)				<i>33.1579.008.011</i>
Assembly kit for DIN-rail				<i>15.7140.000.190</i>
Assembly kit for wall mounting				<i>15.7140.000.290</i>

**AC / DC POWER SUPPLY
PRIMARY SWITCHED MODE
SINGLE OUTPUT
P 362 SERIES**

INPUT	OPERATING DATA																															
Input voltage range without PFC AC 187 - 264V, 50/60 Hz with autoranging to AC 99 - 138V or DC 264 - 347V	Temperature range 0 to 70°C, at free convection integral ventilation with air stream from bottom to top																															
Efficiency 78 - 85%	Derating 2.5% / K at +50°C (see diagram), at Vo = 5 V: 1.7% / K at +40°C																															
Input current limitation ≤ 30 A _{peak} typ. - in cold state ≤ 35 A _{peak} typ. - in hot state	Parallel operation For load share all pin 22 must be connected as shortly as possible. Connect +L with +F and -L with -F directly at the H15-Connector.																															
Internal fuse 10 AT, for PFC 6.3 AT	Weight 1.3 kg																															
OUTPUT	Ventilation from bottom to top of the power supply and the housing-specific heatradiation must not be obstructed when installing the power supply. Ensure fire protection by means of the surrounding housing system.																															
Preset range Vo ±5%																																
Operation indicator Green LED for Vo	MECHANICS																															
Ripple < 50 mV _{pp}	Dimensions 19" plug-in module according to DIN 41494 Part 5																															
Noise voltage < 80 mV _{pp} typ. (band width 20 MHz)	Connection 1. Connector H 15 / DIN 41612 codable 2. At 5 V/70 A - model load current is only allowed to take with special peak-current-plug! Counter plug for 19"-rack is inclusive.																															
Temperature coefficient ≤ 0.025% / K	PIN ASSIGNMENT																															
Switch on/switch off No overshoot of Vo (soft-start)																																
Start-up delay typ. 1 s	<table border="1" style="width: 100%; text-align: center; border-collapse: collapse;"> <tr> <td rowspan="2" style="writing-mode: vertical-rl; transform: rotate(180deg);">H15 DIN 41612</td> <td>30</td> <td>26</td> <td>22</td> <td>18</td> <td>14</td> <td>10</td> <td>6</td> </tr> <tr> <td>N</td> <td>1)</td> <td>load share</td> <td>-L</td> <td>+L</td> <td>+F</td> <td>PF ACFAIL</td> </tr> <tr> <td>32</td> <td>28</td> <td>24</td> <td>20</td> <td>16</td> <td>12</td> <td>8</td> <td>4</td> </tr> <tr> <td>PE ⊕</td> <td>L1</td> <td>-L</td> <td>-L</td> <td>+L</td> <td>+L</td> <td>-F</td> <td>SYS- RESET</td> </tr> </table>	H15 DIN 41612	30	26	22	18	14	10	6	N	1)	load share	-L	+L	+F	PF ACFAIL	32	28	24	20	16	12	8	4	PE ⊕	L1	-L	-L	+L	+L	-F	SYS- RESET
H15 DIN 41612			30	26	22	18	14	10	6																							
	N	1)	load share	-L	+L	+F	PF ACFAIL																									
32	28	24	20	16	12	8	4																									
PE ⊕	L1	-L	-L	+L	+L	-F	SYS- RESET																									
Rise time ≤ 50 ms	<p>1) internally connected at 5V model all ±L internally connected</p>																															
REGULATION																																
Line regulation < 0.2% for Vo at V _{min} - V _{max}	EXPLANATORY NOTES																															
Load regulation < 0.5% for Vo at I _o 0 - 100%	PE ⊕ Protective conductor Do not use supply without PE-connection!																															
Response time < 0.5 ms at I _o 20 - 80%	L1 / N Mains phase / neutral conductor																															
PROTECTION AND CONTROLLING	L Load connection (14 A max. for each contact)																															
Overvoltage protection 125% ±5% V _{nominal} , automatic repeat	F Sense connection (Signal line)																															
Current limitation typ. 110% I _{nominal} , straight characteristic Output permanent short-circuit proof	For reliable operation of the device, it is necessary to connect +L with +F and -L with -F. Maximum voltage compensation of 0.25 V per line.																															
Overtemperature protection Switches off if overheated, switches on again with hysteresis.	 Please refer to the MVG user instructions before use. (also in Internet: www.mgv.de)																															
Mains buffering 20 ms at 100% load																																
Signals ACFAIL and SYSRESET (see diagram)																																
SAFETY																																
IEC 60950 / EN 60950 / VDE 0805 Safety Class I, VDE 0100																																
EMC																																
Flicker EN 61000-3-3																																
Interference suppression/ interference immunity EN 61000-6-2 Intensity 4 EN 61000-4-2 Noise level 10 V/m EN 61000-4-3 Intensity 4 EN 61000-4-4 Intensity 4 EN 61000-4-5 Intensity 4 EN 61000-4-11																																
Interference emission EN 50081-1, EN 55011 / EN 55022 Class B, Radiation depends on assembly																																



Function: Power-Fail signal:
T is blocked at Vo > 95% V_{nominal}
T becomes conductive > 10 ms before Vo drops



Signals ACFAIL / SYSRESET